

Lovato CANADA

Promotions

20
23

● Slim Electromechanical Relay Assembled on the Socket



Item #	Description	Qty/pkg	Unit Price
<u>HRA101CE024</u>	24VAC/DC, 1 C/O contact, 6A, screw terminals	10	\$13.50
<u>HRA101CE024S</u>	24VAC/DC, 1 C/O contact, 6A, spring terminals	10	\$13.50

● Miniature Relays without LED Indicator or Mechanical Actuator



Item #	Description	Qty/pkg	Unit Price
<u>HR401CD012</u>	12VDC, 1 C/O contact, 16A ¹	10	\$4.50
<u>HR401CD024</u>	24VDC, 1 C/O contact, 16A ¹	10	\$4.50
<u>HR402CD012</u>	12VDC, 2 C/O contacts, 10A	10	\$5.00
<u>HR402CD024</u>	24VDC, 2 C/O contacts, 10A	10	\$5.00
<u>HR5XS22</u>	Socket for relays, screw terminals	10	\$4.65
<u>HR5X87</u>	Retain clip	20	\$0.36
<u>HR5X30</u>	Marker tags	100	\$0.30

¹ Rated current if the relay is soldered directly onto the board; with socket, the maximum current is 10A.

● Miniature Relays with LED Indicator and Mechanical Actuator



Item #	Description	Qty/pkg	Unit Price
<u>HR501CA024</u>	24VAC, 1 C/O contact, 16A ¹	10	\$7.25
<u>HR501CA110</u>	120VAC, 1 C/O contact, 16A ¹	10	\$8.25
<u>HR501CA230</u>	230VAC, 1 C/O contact, 16A ¹	10	\$9.75
<u>HR501CD012</u>	12VDC, 1 C/O contact, 16A ¹	10	\$6.35
<u>HR501CD024</u>	24VDC, 1 C/O contact, 16A ¹	10	\$6.35
<u>HR502CA024</u>	24VAC, 2 C/O contacts, 8A	10	\$8.00
<u>HR502CA110</u>	120VAC, 2 C/O contacts, 8A	10	\$9.15
<u>HR502CA230</u>	230VAC, 2 C/O contacts, 8A	10	\$10.80
<u>HR502CD012</u>	12VDC, 2 C/O contacts, 8A	10	\$7.10
<u>HR502CD024</u>	24VDC, 2 C/O contacts, 8A	10	\$7.10
<u>HR5XS22</u>	Socket for relays, screw terminals	10	\$4.65
<u>HR5X87</u>	Retain clip	20	\$0.36
<u>HR5X30</u>	Marker tags	100	\$0.30

¹ Rated current if the relay is soldered directly onto the board; with socket, the maximum current is 10A.

Industrial Relays with LED Indicator and Mechanical Actuator



Item #	Description	Qty/pkg	Unit Price
<u>HR602CA024</u>	24VAC, 2 C/O contacts, 7A	10	\$6.00
<u>HR602CA110</u>	120VAC, 2 C/O contacts, 7A	10	\$6.00
<u>HR602CA230</u>	230VAC, 2 C/O contacts, 7A	10	\$6.00
<u>HR602CD012</u>	12VDC, 2 C/O contacts, 7A	10	\$6.00
<u>HR602CD024</u>	24VDC, 2 C/O contacts, 7A	10	\$6.00
<u>HR604CA024</u>	24VAC, 4 C/O contacts, 5A	10	\$6.85
<u>HR604CA110</u>	120VAC, 4 C/O contacts, 5A	10	\$6.85
<u>HR604CA230</u>	230VAC, 4 C/O contacts, 5A	10	\$6.85
<u>HR604CD012</u>	12VDC, 4 C/O contacts, 5A	10	\$6.85
<u>HR604CD024</u>	24VDC, 4 C/O contacts, 5A	10	\$6.85
<u>HR6XS22</u>	Socket for relays w/2 contacts, screw terminals	10	\$4.00
<u>HR6XS42</u>	Socket for relays w/4 contacts, screw terminals	10	\$4.60
<u>HR6X88</u>	Retain/release clip	20	\$0.36
<u>HR6X30</u>	Marker tags	100	\$0.18

8-Pin and 11-Pin Industrial Relays with LED and Mechanical Actuator



Item #	Description	Qty/pkg	Unit Price
8-Pin type			
<u>HR702CA024</u>	24VAC, 2 C/O contacts, 10A	10	\$8.90
<u>HR702CA110</u>	120VAC, 2 C/O contacts, 10A	10	\$8.90
<u>HR702CA230</u>	230VAC, 2 C/O contacts, 10A	10	\$8.90
<u>HR702CD024</u>	24VDC, 2 C/O contacts, 10A	10	\$8.90
<u>HR702CD110</u>	110VDC, 2 C/O contacts, 10A	10	\$8.90
11-Pin type			
<u>HR703CA024</u>	24VAC, 3 C/O contacts, 10A	10	\$11.00
<u>HR703CA110</u>	120VAC, 3 C/O contacts, 10A	10	\$11.00
<u>HR703CA230</u>	230VAC, 3 C/O contacts, 10A	10	\$11.00
<u>HR703CD024</u>	24VDC, 3 C/O contacts, 10A	10	\$11.00
<u>HR703CD110</u>	110VDC, 3 C/O contacts, 10A	10	\$11.00
<u>HR7XS1</u>	Socket for 8-pin relays, screw terminals	10	\$4.00
<u>HR7XS2</u>	Socket for 11-pin relays, screw terminals	10	\$4.60
<u>HR7X87</u>	Retain clip	20	\$0.36

Power Relay with Atex Certification



Item #	Description	Qty/pkg	Unit Price
<u>HR8020A024</u>	24VAC, 2 NO contacts, 30A	10	\$16.00
<u>HR8020A230</u>	230VAC, 2 NO contacts, 30A	10	\$16.00
<u>HR802CA024</u>	24VAC, 2 C/O contacts, 30A ¹	10	\$16.00
<u>HR802CA230</u>	230VAC, 2 C/O contacts, 30A ¹	10	\$16.00

¹ 3A for NC contact

Note: These items are sold by package only

● Safety Relays



SAFETY RELAY 2NO
SRBES20

\$198.90



SAFETY RELAY 3NO+1NC
SRBES31

\$238.20



SAFETY RELAY EXP. UNIT 4NO+1NC
SRBEM41

\$295.50

● Soft Starters ADXNB



- Built-in bypass relay
- 2 relay outputs
- Rated operational voltage 208 to 600VAC
- Parameters setting with potentiometers

Item #	Auxiliary supply	Current (A)	HP at 480V	HP at 600V	Unit Price
ADXNB006	120-240VAC	6	3	5	\$235.80
ADXNB012	120-240VAC	12	7.5	10	\$286.10
ADXNB018	120-240VAC	18	10	15	\$311.25
ADXNB025	120-240VAC	25	15	20	\$355.30
ADXNB030	120-240VAC	30	20	25	\$440.20
ADXNB038	120-240VAC	38	25	30	\$540.80
ADXNB045	120-240VAC	45	30	40	\$654.00
ADXNB00624	24VAC/VDC	6	3	5	\$247.60
ADXNB01224	24VAC/VDC	12	7.5	10	\$300.45
ADXNB01824	24VAC/VDC	18	10	15	\$326.85
ADXNB02524	24VAC/VDC	25	15	20	\$373.05
ADXNB03024	24VAC/VDC	30	20	25	\$462.20
ADXNB03824	24VAC/VDC	38	25	30	\$567.85
ADXNB04524	24VAC/VDC	45	30	40	\$686.70

● Soft Starters



SIMPLE! INTELLIGENT! EFFICIENT!

- Easy programming in 4 steps only
- Programming via NFC or Wi-Fi
- APP for smart phone or tablet (free)
- Works from 208 to 600VAC
- Auxiliary supply from 120 to 240VAC
- Built-in bypass relay
- Optional RS485 communication
- Modbus-ASCII, Modbus-RTU, Modbus-TCP
- Programmable inputs and outputs

Item #	FLA (A)	208V HP	220-240V HP	380-415V HP	440-480V HP	550-600V HP	Unit Price
ADXL0030600	28	10	10	15	20	25	\$760.55
ADXL0045600	44	10	15	25	30	40	\$1037.75
ADXL0060600	60	20	20	30	40	50	\$1224.60
ADXL0075600	75	25	25	40	50	60	\$1405.05
ADXL0085600	83	25	30	50	60	75	\$1566.25
ADXL0115600	114	40	40	60	75	100	\$1727.30
ADXL0135600*	130	40	50	75	100	125	\$2036.70
ADXL0162600*	156	50	60	75	125	150	\$2226.25
ADXL0195600*	192	60	60	100	150	200	\$2545.90
ADXL0250600*	248	75	100	150	200	250	\$2703.10
ADXL0320600*	320	100	125	200	250	300	\$3008.65

*Terminal lugs kit not included

● Terminal Lugs and Protection Cover Kits

EXA01	KIT OF 3 TERMINAL LUGS FOR ADXL 135A,162A & 195A	\$50.05
EXA02	KIT OF 3 TERMINAL PROTECTION COVERS FOR ADXL 135A, 162A & 195A	\$86.35
EXA03	KIT OF 3 TERMINAL LUGS FOR ADXL 250A & 320A	\$160.25
EXA04	KIT OF 3 TERMINAL PROTECTION COVERS FOR ADXL 250A & 320A	\$141.45

● Manual Motor Starter Kits with Enclosure Type 4X



SM1Z1711P



SM1P...

Item #	Adjustment	Unit Price
SM1P0016KIT	0,1-0,16A	\$81.25
SM1P0025KIT	0,16-0,25A	\$81.25
SM1P0040KIT	0,25-0,4A	\$81.25
SM1P0063KIT	0,4-0,63A	\$81.25
SM1P0100KIT	0,63-1A	\$81.25
SM1P0160KIT	1-1,6A	\$81.25
SM1P0250KIT	1,6-2,5A	\$81.25
SM1P0400KIT	2,5-4A	\$81.25
SM1P0650KIT	4-6,5A	\$81.25
SM1P1000KIT	6,3-10A	\$81.25
SM1P1400KIT	9-14A	\$103.10
SM1P1800KIT	13-18A	\$103.10
SM1P2300KIT	17-23A	\$109.60
SM1P2500KIT	20-25A	\$109.60

● Manual Motor Starter Kits with Enclosure + E-STOP Type 4X



SM1Z1712P



SM1P...

Item #	Adjustment	Unit Price
SM1P0016EKIT	0,1-0,16A	\$110.90
SM1P0025EKIT	0,16-0,25A	\$110.90
SM1P0040EKIT	0,25-0,4A	\$110.90
SM1P0063EKIT	0,4-0,63A	\$110.90
SM1P0100EKIT	0,63-1A	\$110.90
SM1P0160EKIT	1-1,6A	\$110.90
SM1P0250EKIT	1,6-2,5A	\$110.90
SM1P0400EKIT	2,5-4A	\$110.90
SM1P0650EKIT	4-6,5A	\$110.90
SM1P1000EKIT	6,3-10A	\$110.90
SM1P1400EKIT	9-14A	\$116.00
SM1P1800EKIT	13-18A	\$116.00
SM1P2300EKIT	17-23A	\$127.60
SM1P2500EKIT	20-25A	\$127.60

Manual Motor Starter Kits Including Padlockable Enclosure Type 4X



SM1Z1715R



SM1R...

Item #	Adjustment	Unit Price
SM1R0016KIT	0,1-0,16A	\$123.80
SM1R0025KIT	0,16-0,25A	\$123.80
SM1R0040KIT	0,25-0,4A	\$123.80
SM1R0063KIT	0,4-0,63A	\$123.80
SM1R0100KIT	0,63-1A	\$123.80
SM1R0160KIT	1-1,6A	\$123.80
SM1R0250KIT	1,6-2,5A	\$123.80
SM1R0400KIT	2,5-4A	\$123.80
SM1R0650KIT	4-6,5A	\$123.80
SM1R1000KIT	6,3-10A	\$140.55
SM1R1400KIT	9-14A	\$140.55
SM1R1800KIT	13-18A	\$140.55
SM1R2300KIT	17-23A	\$153.40
SM1R2500KIT	20-25A	\$153.40

Limit Switches

- Metal housing
- Degree of protection IP65
- 1NO+1NC contact
- 1/2 NPT thread
- Certification: cULus



KMA1S11N

KMB1S11N

KML2S11N

KME1S11N

KMF1S11N

KMM2S11N

\$43.80

● Time Relay



- Multifunction
- Supply 12 to 240VAC/DC
- Time scale from 0.1 second to 10 days
- 1 relay output SPDT

TMM1

\$55.45

● Time Relay / Counter / Hour Counter with NFC Technology



- Supply: 12 to 240V AC/DC
- Relay output: 8A 250V AC
- Time scale: 0.1 second to 999 days
- Absolute time precision
- Can do more than 40 functions
- Password protection of parameters against undesirable modifications
- QR code for direct access to user's manual



TMM1NFC

\$67.60

● Protection Relay



- For three-phase systems, with or without neutral
- Minimum and maximum voltage
- Minimum and maximum frequency
- Asymmetry
- Phase loss and phase sequence
- With NFC technology
- 1 relay output (8A)

208-240VAC
PMV95NA240NFC

\$235.00

380-575VAC
PMV95NA575NFC

\$235.00

● Voltage Monitoring Relays - Phase Loss / Incorrect Phase Sequence



- For three-phase systems, without neutral
- Phase loss detection if one of the voltages is <70% rated value
- Phase loss tripping time: 60ms
- 1 relay output with 1 changeover contact (SPDT)
- Mounting on DIN rail or screw fixing via pull out tabs

100...240VAC
PMV20A240

\$130.00

208...575VAC
PMV20A575

\$130.00

600VAC
PMV20A600

\$130.00

● Voltage Monitoring Relays - Phase Loss / Incorrect Phase Sequence / Min. & Max AC Voltage



- For three-phase systems, without neutral
- True RMS (TRMS) measurements
- Control of phase-to-phase voltages
- Phase loss detection if one of the voltages is <70% rated value
- Phase loss tripping time: 60ms
- 1 relay output with 1 changeover contact (SPDT)
- Mounting on DIN rail or screw fixing via pull out tabs

208...240VAC
PMV50A240

\$190.00

380...575VAC
PMV50A575

\$190.00

600VAC
PMV50A600

\$190.00

● Level Control Relay



- Emptying or filling functions
- 24 to 240VAC/DC
- 1 relay output SPDT

LVM25240

\$145.00

● Signal Tower Lights Ø50mm

Max. 4 light modules + sound module or 5 light modules + top cover



Sound module
IP20 100DB
LTN50MSH

\$34.60

or



Sound module
IP65 85DB
LTN50MSL

\$34.60

- 50mm plastic fixing base (horizontal or vertical)
- Integrated LED lamp
- Orange, green, red, blue or white modules
- Sound module
- 50mm top cover



Top cover
LTN50C

\$3.65

LTN50ML

↑ Colour



Light module

\$32.90

- 1 ■
- 3 ■
- 4 ■
- 6 ■
- 8 □



Wiring module
12-24VDC
LTN50MW024

\$49.30

or



Wiring module
110-230VAC
LTN50MW230

\$89.75



Extension tube
100mm
LTN50P100T

\$7.70

or



Extension tube
100mm
LTN50P100

\$7.40

Must be ordered with ↓



Fixing base
Plastic horizontal
LTN50BP1

\$8.00

Must be ordered with ↓



Fixing base
Plastic vertical
LTN50BP2

\$8.75

Ø50mm



● Signal Tower Lights Ø70mm

Max. 4 light modules + sound module or 5 light modules + top cover



or



- 70mm plastic fixing base (horizontal or vertical)
- Integrated LED lamp
- Orange, green, red, blue or white modules
- Sound module
- 70mm top cover



LTN70ML

↑ Colour



Light module
\$37.80

- 1 ■
- 3 ■
- 4 ■
- 6 ■
- 8 □



or



or



Must be ordered with ↓



Fixing base
Plastic horizontal
LTN70BP1
\$8.20

Must be ordered with ↓



Fixing base
Plastic vertical
LTN70BP2
\$9.05

Ø70mm



Pushbutton Kits
Degree of protection NEMA 4X (IP69K)

Pushbutton NO contact Contact holder

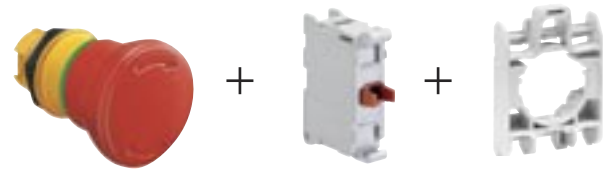


LPCB102KIT (black) **LPCB105KIT** (yellow)
LPCB103KIT (green) **LPCB106KIT** (blue)
LPCB104KIT (red) **LPCB108KIT** (white)
LPCB104KIT-NC (red, with NC contact)

\$11.00

E-Stop Kit
Degree of protection NEMA 4X (IP69K)

E-stop twist to release NC contact Contact holder



LPCB6644KIT

\$24.55

Selector Kits
Degree of protection NEMA 4X (IP69K)

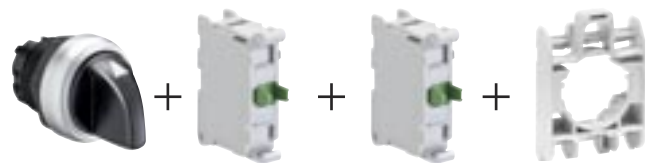
2 position selector NO contact Contact holder



LPCS120KIT

\$17.80

3 position selector NO contact NO contact Contact holder



LPCS130KIT

\$21.90

Key Selector Kits
Degree of protection NEMA 4X (IP69K)

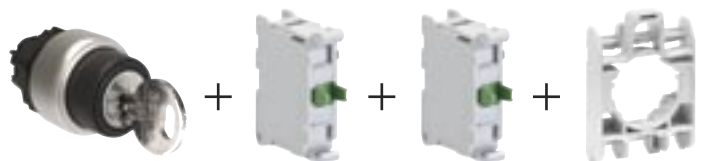
2 position selector NO contact Contact holder



LPCS320KIT

\$28.30

3 position selector NO contact NO contact Contact holder



LPCS330KIT

\$36.20

22mm Metal Pushbutton Kits

Degree of protection NEMA 4X (IP69K)

Pushbutton

NO
contact

Contact
holder



+



+



LPSB102KIT (black)
LPSB103KIT (green)
LPSB104KIT (red)
LPSB104KIT-NC (red, with NC contact)

LPSB105KIT (yellow)
LPSB106KIT (blue)
LPSB108KIT (white)

\$16.00

22mm Metal Selector Kits

Degree of protection NEMA 4X (IP69K)

2 position
selector

NO
contact

Contact
holder



+



+



LPSS120KIT

\$25.00

3 position
selector

NO
contact

NO
contact

Contact
holder



+



+



+



LPSS130KIT

\$29.00

22mm Metal Key Selector Kits

Degree of protection NEMA 4X (IP69K)

2 position
selector

NO
contact

Contact
holder



+



+



LPSS320KIT

\$46.00

3 position
selector

NO
contact

NO
contact

Contact
holder



+



+



+



LPSS330KIT

\$55.00

● **Yellow Control Station with Protection in Polycarbonate Enclosure
NEMA 4X (IP69K)**

LPZP1B5P603

Turn to release E-stop
with 1NC contact ISO 13850

\$59.90



● **Yellow Control Station with 1 Actuator in Polycarbonate Enclosure
NEMA 4X (IP69K)**

LPZP1B5603

Twist to release E-Stop
with 1NC contact ISO 13850

\$49.05



● **Grey Control Stations with 1 Actuator in Polycarbonate Enclosure
NEMA 4X (IP69K)**

LPZP1B8101

Green p.b. "START" symbol
with 1NO contact

\$29.70



LPZP1B8103

Red p.b. "STOP" symbol
with 1NC contact

\$29.70



LPZP1B8302

Key selector 2 positions "0-I"
label with 1NO & 1NC contacts

\$59.45



● **Grey Control Stations with 2 Actuators in Polycarbonate Enclosure
NEMA 4X (IP69K)**

LPZP2B8900

Green p.b. "I" symbol
with 1NO contact and
red p.b. "O" symbol
with 1NC contact

\$48.65



LPZP2B8902

White p.b. up arrow symbol
with 1NO contact and
black p.b. down arrow
symbol with 1NO contact

\$48.65



● Pilot Lights LED Type



LPML	
Voltage ↑	Colour ↑
12VAC/DC	A 1 ■
24VAC/DC	B 3 ■
48VAC/DC	D 4 ■
110VAC	E 5 ■
110VDC	F 6 ■
230VAC	M 7 □
220VDC	N

\$10.40

Protection Degree : As per UL: 3R, 4/12, 4X / As per IEC: IP66, IP67, IP69K

● Monoblock Potentiometers



LPCPA	
001	1 kΩ
002	2.5 kΩ
005	5 kΩ
010	10 kΩ
050	50 kΩ
100	100 kΩ
500	500 kΩ

\$48.45

Protection Degree : As per UL: 3R, 4/12, 4X / As per IEC: IP66, IP67, IP69K

● Pulse and Steady Tone Monoblock Buzzers



IP40: sound intensity 90dB/10cm.
IP69K: sound intensity 80dB/10cm.

\$49.65

\$51.65

Supply voltage
9-15VAC/DC
18-30VAC/DC
85-140VAC/DC
185-265VAC/DC

IP40
LPCZSA
LPCZSB
LPCZSE
LPCZSM

Supply voltage
9-15VAC/DC
18-30VAC/DC
85-140VAC/DC
185-265VAC/DC

IP69K
LPCZSAIP
LPCZSBIP
LPCZSEIP
LPCZSMIP

● Communication Interfaces



LPCD	
USB 01	3.0 A/A connection type
USB 03	3.0 A/B connection type
USB 05	3.0 B/A connection type
RJ45 06	Ethernet connection type (shielded)

\$38.70

Protection Degree : As per UL: 3R, 4/12, 4X / As per IEC: IP65 (with cap mounted)

● Enclosed Disconnects



32A



63A



80A

- Padlockable handle (for 3 padlocks in OFF position)
- Degree of protection: IP65; Nema type 4X
- Rated insulation voltage Ui: 1000VAC
- Rated as motor disconnect
- Also rated as manual motor controller

GAZ032UL

GAZ063SAUL

GAZ080UL

\$61.00

\$116.00

\$166.00

● 32A, 63A or 80A Disconnect Kits



+



+



The kit includes:

- 32A, 63A or 80A disconnect rated as motor disconnect
- Shaft 200mm length
- Padlockable GAX63 handle, ring-type fixing, Nema type 4X

32A

GA032KIT

63A

GA063KIT

80A

GA080KIT

\$58.00

\$87.65

\$112.10

● 200A or 400A Disconnect Kits with Pistol Handle



+



+



The GL0200C1ULKIT includes:

- 200A disconnect UL98 (CSA 22.2 No. 4)
- Shaft 300mm length
- Padlockable pistol grip handle (defeatable) red/yellow, type 4X

The GL0400C1ULKIT includes:

- 400A disconnect UL98 (CSA 22.2 No. 4)
- Shaft 500mm length
- Padlockable pistol grip handle (defeatable) red/yellow, type 4X

200A

GL0200C1ULKIT

400A

GL0400C1ULKIT

\$455.40

\$675.35

● 30A, 60A, 100A or 200A Fusible Disconnect Kits (UL98) Type “J”

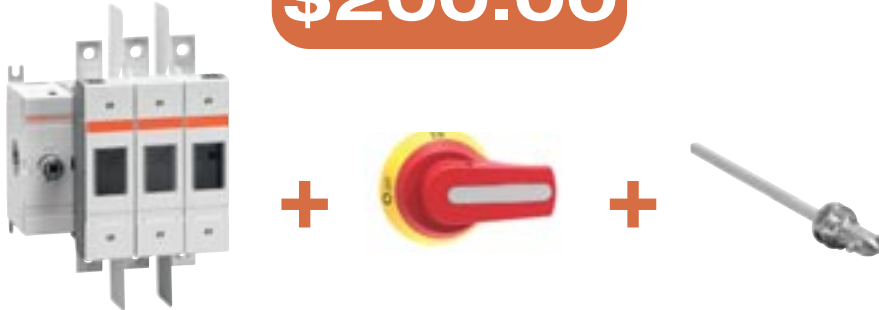
The kit includes:

- 30A, 60A, 100A or 200A fusible disconnect (UL98)
- Padlockable pistol grip handle (defeatable) red/yellow Type 4X
- Shaft 300mm length



30A: GMFJ030C12KIT

\$200.00



60A: GMFJ060C03KIT

\$253.00

100A: GMFJ100C03KIT

\$319.00

200A: GMFJ200C03KIT

\$724.85

● METAL Control Stations IP67 (Type 4X)



Item #	Description	Cover	Unit Price
LPZM1A5	1 hole	Yellow	\$38.70
LPZM1A5P	1 hole with guard	Yellow	\$51.65
LPZM1A8	1 hole	Grey	\$38.70
LPZM2A5	2 holes	Yellow	\$45.15
LPZM2A8	2 holes	Grey	\$45.15
LPZM3A8	3 holes	Grey	\$54.15
LPZM4A8	4 holes	Grey	\$77.40
LPZM5A8	5 holes	Grey	\$103.10
LPZM6A8	6 holes	Grey	\$126.35

● 2 or 4 Direction Metal Joysticks

LPSJ200

2 directions spring return with 2NO contacts

\$58.15

LPSJ211

2 directions maintained interlock with 2NO contacts

\$69.80



LPSJ400

4 directions spring return with 4NO contacts

\$78.55

LPSJ411

4 directions maintained interlock with 4NO contacts

\$94.20



● Miniature Circuit Breakers Supplementary Protection (UL1077/CSA: C22.2 N°235)



Item #	Description	Qty/ pkg	Unit Price
P1MB1PC01	1 POLE - CURVE C - 1A	12	\$14.75
P1MB1PC02	1 POLE - CURVE C - 2A	12	\$14.75
P1MB1PC03	1 POLE - CURVE C - 3A	12	\$14.75
P1MB1PC04	1 POLE - CURVE C - 4A	12	\$14.75
P1MB1PC06	1 POLE - CURVE C - 6A	12	\$14.75
P1MB1PC08	1 POLE - CURVE C - 8A	12	\$14.75
P1MB1PC10	1 POLE - CURVE C - 10A	12	\$14.75
P1MB1PC13	1 POLE - CURVE C - 13A	12	\$14.75
P1MB1PC16	1 POLE - CURVE C - 16A	12	\$14.75
P1MB1PC20	1 POLE - CURVE C - 20A	12	\$14.75
P1MB1PC25	1 POLE - CURVE C - 25A	12	\$14.75
P1MB1PC32	1 POLE - CURVE C - 32A	12	\$14.75
P1MB1PC40	1 POLE - CURVE C - 40A	12	\$18.70
P1MB1PC50	1 POLE - CURVE C - 50A	12	\$18.70
P1MB1PC63	1 POLE - CURVE C - 63A	12	\$18.70



Item #	Description	Qty/ pkg	Unit Price
P1MB2PC01	2 POLES - CURVE C - 1A	6	\$35.00
P1MB2PC01V6	2 POLES - CURVE C - 1.6A	6	\$35.00
P1MB2PC02	2 POLES - CURVE C - 2A	6	\$35.00
P1MB2PC03	2 POLES - CURVE C - 3A	6	\$35.00
P1MB2PC04	2 POLES - CURVE C - 4A	6	\$35.00
P1MB2PC06	2 POLES - CURVE C - 6A	6	\$35.00
P1MB2PC08	2 POLES - CURVE C - 8A	6	\$35.00
P1MB2PC10	2 POLES - CURVE C - 10A	6	\$35.00
P1MB2PC13	2 POLES - CURVE C - 13A	6	\$35.00
P1MB2PC16	2 POLES - CURVE C - 16A	6	\$35.00
P1MB2PC20	2 POLES - CURVE C - 20A	6	\$35.00
P1MB2PC25	2 POLES - CURVE C - 25A	6	\$35.00
P1MB2PC32	2 POLES - CURVE C - 32A	6	\$35.00
P1MB2PC40	2 POLES - CURVE C - 40A	6	\$39.00
P1MB2PC50	2 POLES - CURVE C - 50A	6	\$39.00
P1MB2PC63	2 POLES - CURVE C - 63A	6	\$39.00

Note: This product is cURus.

● Miniature Circuit Breakers Supplementary Protection (UL1077/CSA: C22.2 N°235)



Item #	Description	Qty/ pkg	Unit Price
<u>P1MB3PC01</u>	3 POLES - CURVE C - 1A	4	\$49.50
<u>P1MB3PC02</u>	3 POLES - CURVE C - 2A	4	\$49.50
<u>P1MB3PC03</u>	3 POLES - CURVE C - 3A	4	\$49.50
<u>P1MB3PC04</u>	3 POLES - CURVE C - 4A	4	\$49.50
<u>P1MB3PC06</u>	3 POLES - CURVE C - 6A	4	\$49.50
<u>P1MB3PC08</u>	3 POLES - CURVE C - 8A	4	\$49.50
<u>P1MB3PC10</u>	3 POLES - CURVE C - 10A	4	\$49.50
<u>P1MB3PC13</u>	3 POLES - CURVE C - 13A	4	\$49.50
<u>P1MB3PC16</u>	3 POLES - CURVE C - 16A	4	\$49.50
<u>P1MB3PC20</u>	3 POLES - CURVE C - 20A	4	\$49.50
<u>P1MB3PC25</u>	3 POLES - CURVE C - 25A	4	\$49.50
<u>P1MB3PC32</u>	3 POLES - CURVE C - 32A	4	\$49.50
<u>P1MB3PC40</u>	3 POLES - CURVE C - 40A	4	\$53.60
<u>P1MB3PC50</u>	3 POLES - CURVE C - 50A	4	\$53.60
<u>P1MB3PC63</u>	3 POLES - CURVE C - 63A	4	\$53.60

Note: This product is cURus.

● Miniature Circuit Breakers Branch Protection (UL489/CSA: C22.2 N°5)



Item #	Description	Qty/ pkg	Unit Price
P1MBUH1PC01	1 POLE - CURVE C - 1A	12	\$28.15
P1MBUH1PC01V6	1 POLE - CURVE C - 1.6A	12	\$28.15
P1MBUH1PC02	1 POLE - CURVE C - 2A	12	\$28.15
P1MBUH1PC03	1 POLE - CURVE C - 3A	12	\$28.15
P1MBUH1PC04	1 POLE - CURVE C - 4A	12	\$28.15
P1MBUH1PC05	1 POLE - CURVE C - 5A	12	\$28.15
P1MBUH1PC06	1 POLE - CURVE C - 6A	12	\$28.15
P1MBUH1PC07	1 POLE - CURVE C - 7A	12	\$28.15
P1MBUH1PC08	1 POLE - CURVE C - 8A	12	\$28.15
P1MBUH1PC10	1 POLE - CURVE C - 10A	12	\$28.15
P1MBUH1PC12	1 POLE - CURVE C - 12A	12	\$28.15
P1MBUH1PC13	1 POLE - CURVE C - 13A	12	\$28.15
P1MBUH1PC15	1 POLE - CURVE C - 15A	12	\$28.15
P1MBUH1PC16	1 POLE - CURVE C - 16A	12	\$28.15
P1MBUH1PC20	1 POLE - CURVE C - 20A	12	\$28.15
P1MBUH1PC25	1 POLE - CURVE C - 25A	12	\$28.15
P1MBUH1PC30	1 POLE - CURVE C - 30A	12	\$28.15
P1MBUH1PC32	1 POLE - CURVE C - 32A	12	\$28.15
P1MBUL1PC35	1 POLE - CURVE C - 35A	12	\$29.40
P1MBUL1PC40	1 POLE - CURVE C - 40A	12	\$29.40
P1MBUL1PC50	1 POLE - CURVE C - 50A	12	\$29.40
P1MBUL1PC60	1 POLE - CURVE C - 60A	12	\$29.40
P1MBUL1PC63	1 POLE - CURVE C - 63A	12	\$29.40



Item #	Description	Qty/ pkg	Unit Price
P1MBUH2PC01	2 POLES - CURVE C - 1A	6	\$69.00
P1MBUH2PC01V6	2 POLES - CURVE C - 1.6A	6	\$69.00
P1MBUH2PC02	2 POLES - CURVE C - 2A	6	\$69.00
P1MBUH2PC03	2 POLES - CURVE C - 3A	6	\$69.00
P1MBUH2PC04	2 POLES - CURVE C - 4A	6	\$69.00
P1MBUH2PC05	2 POLES - CURVE C - 5A	6	\$69.00
P1MBUH2PC06	2 POLES - CURVE C - 6A	6	\$69.00
P1MBUH2PC07	2 POLES - CURVE C - 7A	6	\$69.00
P1MBUH2PC08	2 POLES - CURVE C - 8A	6	\$69.00
P1MBUH2PC10	2 POLES - CURVE C - 10A	6	\$69.00
P1MBUH2PC12	2 POLES - CURVE C - 12A	6	\$69.00
P1MBUH2PC13	2 POLES - CURVE C - 13A	6	\$69.00
P1MBUH2PC15	2 POLES - CURVE C - 15A	6	\$69.00
P1MBUH2PC16	2 POLES - CURVE C - 16A	6	\$69.00
P1MBUH2PC20	2 POLES - CURVE C - 20A	6	\$69.00
P1MBUH2PC25	2 POLES - CURVE C - 25A	6	\$69.00
P1MBUH2PC30	2 POLES - CURVE C - 30A	6	\$69.00
P1MBUH2PC32	2 POLES - CURVE C - 32A	6	\$69.00
P1MBUL2PC35	2 POLES - CURVE C - 35A	6	\$75.00
P1MBUL2PC40	2 POLES - CURVE C - 40A	6	\$75.00
P1MBUL2PC50	2 POLES - CURVE C - 50A	6	\$75.00
P1MBUL2PC60	2 POLES - CURVE C - 60A	6	\$75.00
P1MBUL2PC63	2 POLES - CURVE C - 63A	6	\$75.00

● Miniature Circuit Breakers Branch Protection (UL489/CSA: C22.2 N°5)



Item #	Description	Qty/ pkg	Unit Price
P1MBUH3PC01	3 POLES - CURVE C - 1A	4	\$100.35
P1MBUH3PC01V6	3 POLES - CURVE C - 1.6A	4	\$100.35
P1MBUH3PC02	3 POLES - CURVE C - 2A	4	\$100.35
P1MBUH3PC03	3 POLES - CURVE C - 3A	4	\$100.35
P1MBUH3PC04	3 POLES - CURVE C - 4A	4	\$100.35
P1MBUH3PC05	3 POLES - CURVE C - 5A	4	\$100.35
P1MBUH3PC06	3 POLES - CURVE C - 6A	4	\$100.35
P1MBUH3PC07	3 POLES - CURVE C - 7A	4	\$92.35
P1MBUH3PC08	3 POLES - CURVE C - 8A	4	\$92.35
P1MBUH3PC10	3 POLES - CURVE C - 10A	4	\$92.35
P1MBUH3PC12	3 POLES - CURVE C - 12A	4	\$92.35
P1MBUH3PC13	3 POLES - CURVE C - 13A	4	\$92.35
P1MBUH3PC15	3 POLES - CURVE C - 15A	4	\$92.35
P1MBUH3PC16	3 POLES - CURVE C - 16A	4	\$92.35
P1MBUH3PC20	3 POLES - CURVE C - 20A	4	\$92.35
P1MBUH3PC25	3 POLES - CURVE C - 25A	4	\$92.35
P1MBUH3PC30	3 POLES - CURVE C - 30A	4	\$92.35
P1MBUH3PC32	3 POLES - CURVE C - 32A	4	\$92.35
P1MBUL3PC35	3 POLES - CURVE C - 35A	4	\$105.75
P1MBUL3PC40	3 POLES - CURVE C - 40A	4	\$105.75
P1MBUL3PC50	3 POLES - CURVE C - 50A	4	\$105.75
P1MBUL3PC60	3 POLES - CURVE C - 60A	4	\$105.75
P1MBUL3PC63	3 POLES - CURVE C - 63A	4	\$105.75

● 16A Cam Switches Voltmeter/Ammeter



Voltmeter
Phase-Phase L1L2-L2L3-L3L1, front mount
GX1667U

\$42.90

Ammeter
With or without CT, L1-L2-L3, front mount
GX1697U

\$72.35

Ammeter
With CT, L1-L2-L3, front mount
GX1698U

\$45.45

UL/CSA general use [A]	UL/CSA horsepower ratings					
	1 phase		3 phases			
	120V	230V	200V	230V	480V	600V
12	¾	1	1½	3	5	5

● 25A Cam Switches ON/OFF type



1 pole
Front mount
7GN2590U

\$42.90

2 poles
Front mount
7GN2591U

\$45.45

3 poles
Front mount
7GN2510U

\$47.85

UL/CSA general use [A]	UL/CSA horsepower ratings					
	1 phase		3 phases			
	120V	230V	200V	230V	480V	600V
30	1½	3	3	5	10	15

● 25A Changeover Cam Switches 1-0-2



3 poles
Front mount
7GN2553U

\$58.85

4 poles
Front mount
7GN2575U

\$72.35

UL/CSA general use [A]	UL/CSA horsepower ratings					
	1 phase		3 phases			
	120V	230V	200V	230V	480V	600V
30	1½	3	3	5	10	15

● Fuse Holders



- Maximum rated voltage Ue 690VAC
- Operational voltage for status light indicator 120...690 VAC
- Compact sizes compliant with standards for electrical equipment
- UL and CSA certified versions

Item #	Description	Status Indicator	Qty/ pkg	Unit Price
MIDGET FUSE HOLDERS (10X38)				
FB01F1P	Fuse holder 1 pole 690V 32A	No	12	\$6.40
FB01F1PL	Fuse holder 1 pole 690V 32A	Yes	12	\$12.25
FB01F2P	Fuse holder 2 poles 690V 32A	No	6	\$13.80
FB01F3P	Fuse holder 3 poles 690V 32A	No	4	\$20.65

CC FUSE HOLDERS (10X38)

FB01G1P	Fuse holder 1 pole 600V 30A	No	12	\$6.40
FB01G1PL	Fuse holder 1 pole 600V 30A	Yes	12	\$12.25
FB01G2P	Fuse holder 2 poles 600V 30A	No	6	\$14.20
FB01G3P	Fuse holder 3 poles 600V 30A	No	4	\$20.65

Note: These items are sold by package only

● Switching Power Supplies



- Rated output voltage: 24VDC
- Output power: 5...480W
- Wide input voltage range (90 to 265VAC & 120 to 375VDC)
- High efficiency up to 92%
- Adjustable output voltage
- Parallel connection using switch placed on front (some models)
- Certification: cULus Listed

Item #	Description	Output Voltage DC	Current DC	Output Power	Unit Price
PSL100524	Single Phase	24	0.21A	5W	\$42.95
PSL101024	Single Phase	24	0.42A	10W	\$44.20
PSL101824	Single Phase	24	0.75A	18W	\$48.95
PSL106024	Single Phase	24	2.5A	60W	\$80.35
PSL112024	Single Phase	24	5A	120W	\$135.15
PSL124024	Single Phase	24	10A	240W	\$228.85
PSL130024	Single Phase	24	12.5A	300W	\$317.05
PSL148024	Single Phase	24	20A	480W	\$353.10

● Compact Switching Power Supplies



- Rated output voltage: 24VDC
- Output power: 30...100W
- Wide input voltage range (120 to 240VAC)
- High efficiency up to 89%
- Adjustable output voltage
- Certification: cULus Listed

Item #	Description	Output Voltage DC	Current DC	Output Power	Unit Price
PSE103024	Single Phase	24	1.25A	30W	\$52.20
PSE105024	Single Phase	24	2.1A	50W	\$60.70
PSE107224	Single Phase	24	3A	72W	\$74.35
PSE110024	Single Phase	24	4.2A	100W	\$90.25

● Energy Meters - Multimeters



DMG600

\$528.55

DMG610

\$567.25

Built-in RS485 communication port

Single, Two and Three Phase with or without neutral	DMG600
Icon-text LCD	✓
Voltage-Current measurements	✓
Frequency-Power measurements	✓
Power factor measurement	✓
Active-Reactive energy measurements	✓
THD (Total Harmonic Distortion Analysis)	✓
Usage in low to high voltage systems	✓
Measuring Range 50-720 VAC phase to phase (30-360VAC ph-N)	✓
Supply voltage range 100-400VAC/120-250VDC	✓
Front optical port	✓
Built-in RS485 communication port	DMG610

● Energy Counter - Single Phase



DMED100T1A120

\$140.00



DMED110T1A120

\$170.00

LCD display 5+1 digit count	✓
Direct connection up to 40A	✓
120VAC supply	✓
Clearable partial energy measurement	✓
1 pulse output	DMED100T1A120
Program. static output	DMED110T1A120
Multimeasurements	DMED110T1A120

● HMI Displays

- Widescreen display with resistive touchscreen
- LED backlight
- Ethernet, USB and serial port (type RS232-RS485-RS422)
- Auxiliary supply: 12-24VDC
- Protection degree: IP66, type 2 and 4X (front); IP20 (rear)



HMI 4.3" LRHA04

\$454.75



HMI 7" LRHA07

\$492.65



HMI 10.1" LRHA10

\$1107.70

Programming Licence for 1 user LRHSW01

\$173.05

● HMI Starter Kits



24VDC Supply

The kit includes:

- PLC 12 inputs + 8 outputs
- All programming softwares
- All programming cables
- 1 programming licence
- 1 HMI

HMI 4.3"

LRD20HMI04KIT

\$1205.90

HMI 7"

LRD20HMI07KIT

\$1323.90

HMI 10.1"

LRD20HMI10KIT

\$2082.05

● Micro PLC Starter Kits



- 120VAC or 240VAC Supply type with 6 inputs + 4 outputs

LRDKIT10RA240

- 24VDC or 24VAC Supply type with 8 inputs + 4 outputs

LRDKIT12RD024
LRDKIT12RA024

Includes Software LRXSW and USB cable LRXC03

\$198.55

● Micro PLC



- 120VAC or 240VAC Supply type with 6 inputs + 4 outputs

LRD10RA240

- 24VDC or 24VAC Supply type with 8 inputs + 4 outputs

LRD12RD024
LRD12RA024

\$156.00

Definite Purpose Contactors

Ideal for air conditioning, heating, ventilation, refrigeration in the HVAC industry, compressors, food and beverage industry.



DPBG12



DPBF09
DPBF12
DPBF18



DPBF26
DPBF32



DPBF50
DPBF65

Item #	Motor Full Load Amps (FLA) 600V	Locked Rotor Amps (LRA)			Resistive Load 600V	Maximum Horsepower						Type of Terminal	Unit Price
		240V	480V	600V		1 Phase		3 Phase		480V	600V		
[A]	[A]	[A]	[A]	[A]	[A]	[HP]	[HP]	[HP]	[HP]	[HP]	[HP]		
Non-reversing three-pole definite purpose contactors, 600VAC.													
DPBG1210A①	14	84	84	84	20	3/4	2	3	3	10	10	Clamp-screw	\$35.40
DPBF0910A①	20	120	120	100	30	1 1/2	3	5	5	10	10	Clamp-screw	\$35.40
DPBF1210A①	25	150	150	125	30	2	3	5	5	10	15	Clamp-screw	\$41.30
DPBF1810A①	30	180	180	150	32	2	5	7 1/2	7 1/2	15	20	Clamp-screw	\$47.20
DPBF2600A①	40	240	240	200	50	3	7 1/2	10	10	30	30	Clamp-screw	\$53.10
DPBF3200A①	50	300	300	250	55	3	10	15	15	30	40	Clamp-screw	\$64.90
DPBF5000A①	70	420	420	350	90	5	15	20	25	50	50	Double lug-clamp	\$152.20
DPBF6500A①	80	480	480	400	100	7 1/2	15	25	30	60	60	Double lug-clamp	\$164.00
Accessory.													
BFX8903	Metal screw-fixing plate for DPBF09-DPBF32 types												\$2.40

DPBG12, DPBF09, DPBF12 and DPBF18 are supplied with built-in 1NO auxiliary contact (SPST). Types with 1NC contact are also available; in the item #, replace digits "10" with "01".

① Complete item # with coil code from the table below:

Code	Voltage range
02460	24VAC 60Hz
12060	120VAC 60Hz
23060	230VAC 60Hz
46060	460VAC 60Hz
57560	575VAC 60Hz

Certifications and compliance

Certifications: UL Listed for USA and Canada (cULus - File E93602) under Motor Controllers – Definite purpose contactors.

All contactors are CE marked per European Union requirements.

Compliant with standards: UL/CSA C22.2 n°60947-1, UL/CSA C22.2 n°60947-4-1, UL 508, CSA C22.2 n°14.

Main Features:

- Motor FLA ratings at 600VAC: 14 to 80A
- Finger safe terminals
- Positive (force) guided contacts
- Up to four front or side mount auxiliary contacts
- Highly conductive auxiliary contacts
- Quick and simple installation for accessories
- Easy coil replacement
- Wide coil operating range.

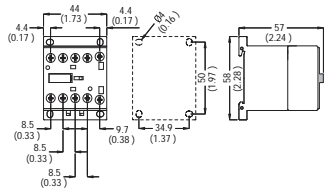
Operating characteristics

- All types have undergone UL endurance tests of 250,000 cycles.
- Average coil consumption at 20°C/70°F:

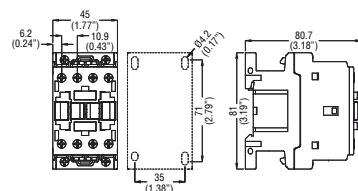
	In rush	Holding
• DPBG12	25VA	4VA
• DPBF09-32	75VA	9VA
• DPBF50-65	210VA	15VA
- Built-in auxiliary contact ratings: A600 for all SPST, if any
- Screw termination:

	Torque	Wire size
• DPBG12	9lbin	AWG8-12
• DPBF09-18	13-16lbin	AWG8-16
• DPBF26-32	22-27lbin	AWG6-14
• DPBF50-65	44lbin	AWG2-14
- Operating temperature:
 - DPBG12: -40...+60°C/-40...+140°F
 - DPBF: -50...+70°C/-60...+160°F.

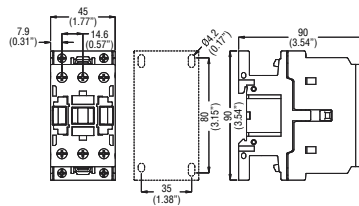
DIMENSIONS [mm (in)] Definite-purpose contactors DPBG12



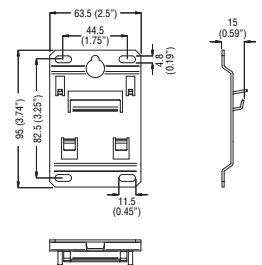
DPBF09-DPBF12-DPBF18



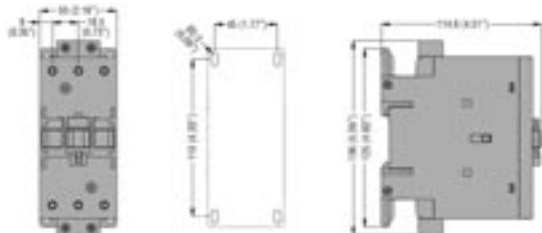
DPBF26-DPBF32



Fixing plate BFX8903



DPBF50-DPBF65



Prices are subject to change without notice

All products are CSA or cULus approved

**ALWAYS INDICATE LOVATO CANADA PROMO 2023 CODE
WHEN PLACING ORDERS THROUGH AUTHORIZED DISTRIBUTORS.**

Expiration date: December 31, 2023

NOTES

A large, empty grid of small squares, typical of graph paper, intended for taking notes. The grid consists of approximately 30 columns and 35 rows.

LOVATO ELECTRIC CORP.

4500 Garand Street
Laval, Quebec H7L 5Z6
CANADA

Tel.: 450-681-9200
Fax: 450-681-9884
Email: info@lovato.ca



Follow us on twitter
[lovatocanada@lovatocanada1](https://twitter.com/lovatocanada1)

www.Lovato.ca