

**Growes
Industries**

Clean Energy - Solutions

823 Red Maple Court,
Whitby, Ontario
Canada, L1N 7V7
Tel (905) 244-2786
<https://growes.ca>
Email: sales@growes.ca



LF100 Light Flex Control Cable



Recommended Applications:

- Machine tools, CNC machines, grinding machines, woodworking machinery, control panel to machine connections.Plus extremely light flexing applications.

Conductor:

- Bare copper.

Insulating Compound:

- Specially formulated oil resistant PVC.

Colour Code:

- Black with white number coding Conductor count for three conductor cable and beyond includes a green/yellow ground conductor (minimum 30% coverage).

Jacketing Compound:

- Specially formulated oil resistant PVC.

Minimum Bend Radius:

- For installation only. 4 x cable diameter.

Temperature Range:

- For static applications -40°C to + 90°C.

Nominal Voltage Rating:

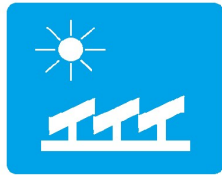
- 600V.

Test Voltage:

- 3000V.

Approvals:

- AWM 21098, 90C, 600V, 60C OIL, 235992 CSA, UL, AWM I/II, A/B, 90C, 600V, CE, OIL RES. RoHS Compliant. Conforms to CE low voltage directive. Cable now being produced with CSA FT4 rating.

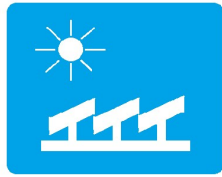


Growes Industries

Clean Energy - Solutions

823 Red Maple Court,
Whitby, Ontario
Canada, L1N 7V7
Tel (905) 244-2786
<https://growes.ca>
Email: sales@growes.ca

Part number	Size	Conductor	Outer Diameter (inches)	Outer Diameter (mm)	Weight Lb/1000ft
1000204	2AWG	4	1.252	31.8	1336
1000205	2AWG	5	1.392	35.5	1629
1000404	4AWG	4	1.058	26.87	905
1000405	4AWG	5	1.166	29.62	1063
1000604	6AWG	4	0.893	22.68	610
1000605	6AWG	5	0.98	24.89	780
1000804	8AWG	4	0.704	17.88	393
1000805	8AWG	5	0.808	20.52	465
1001003	10AWG	3	0.486	12.34	185
1001004	10AWG	4	0.533	13.54	233
1001005	10AWG	5	0.623	15.82	281
1001007	10AWG	7	0.678	17.22	381
1001203	12AWG	3	0.412	10.46	135
1001204	12AWG	4	0.447	11.35	178
1001205	12AWG	5	0.5	12.7	210
1001207	12AWG	7	0.542	13.77	271
1001402	14AWG	2	0.324	8.23	66
1001403	14AWG	3	0.345	8.76	81
1001404	14AWG	4	0.375	9.53	101
1001405	14AWG	5	0.393	9.98	128
1001407	14AWG	7	0.452	11.48	160
1001409	14AWG	9	0.545	13.84	245
1001412	14AWG	12	0.615	15.62	293
1001418	14AWG	18	0.742	18.85	480
1001425	14AWG	25	0.845	21.46	626
1001602	16AWG	2	0.27	6.86	50
1001603	16AWG	3	0.284	7.21	60
1001604	16AWG	4	0.312	7.92	75
1001605	16AWG	5	0.344	8.74	90
1001607	16AWG	7	0.38	9.65	128
1001609	16AWG	9	0.479	12.17	167
1001612	16AWG	12	0.521	13.23	198
1001615	16AWG	15	0.576	14.63	240
1001618	16AWG	18	0.608	15.44	280
1001625	16AWG	25	0.725	18.42	399
1001630	16AWG	30	0.773	19.63	453



Growes Industries

Clean Energy - Solutions

823 Red Maple Court,
Whitby, Ontario
Canada, L1N 7V7
Tel (905) 244-2786
<https://growes.ca>
Email: sales@growes.ca

Part number	Size	Conductor	Outer Diameter (inches)	Outer Diameter (mm)	Weight Lb/1000ft
1001634	16AWG	34	0.832	21.13	518
1001641	16AWG	41	0.934	23.72	657
1001650	16AWG	50	1.014	25.76	781
1001661	16AWG	61	1.046	26.5	974
1001802	18AWG	2	0.252	6.4	38
1001803	18AWG	3	0.263	6.68	47
1001804	18AWG	4	0.275	6.99	57
1001805	18AWG	5	0.303	7.7	67
1001807	18AWG	7	0.341	8.66	86
1001809	18AWG	9	0.43	10.92	111
1001812	18AWG	12	0.447	11.35	147
1001815	18AWG	15	0.494	12.55	176
1001818	18AWG	18	0.541	13.74	216
1001825	18AWG	25	0.64	16.26	293
1001830	18AWG	30	0.67	17.02	331
1001834	18AWG	34	0.721	18.31	400
1001841	18AWG	41	0.808	20.52	482
1001850	18AWG	50	0.884	22.45	569
1001861	18AWG	61	0.935	23.75	668
1002002	20AWG	2	0.212	5.38	31
1002003	20AWG	3	0.218	5.54	35
1002004	20AWG	4	0.245	6.22	45
1002005	20AWG	5	0.266	6.76	53
1002007	20AWG	7	0.293	7.44	64
1002009	20AWG	9	0.357	9.07	92
1002012	20AWG	12	0.382	9.7	115
1002018	20AWG	18	0.455	11.56	158
1002025	20AWG	25	0.547	13.89	226
1002034	20AWG	34	0.621	15.77	328
1002041	20AWG	41	0.665	16.89	373
1002050	20AWG	50	0.71	18.03	443
1002061	20AWG	61	0.718	18.24	514