

Lovato CANADA

Promotions

2024



ENERGY AND AUTOMATION

● Slim Electromechanical Relay Assembled on the Socket



Item #	Description	Qty/pkg	Unit Price
<u>HRA101CE024</u>	24VAC/DC, 1 C/O contact, 6A, screw terminals	10	\$13.85
<u>HRA101CE024S</u>	24VAC/DC, 1 C/O contact, 6A, spring terminals	10	\$13.85

● Miniature Relays without LED Indicator or Mechanical Actuator



Item #	Description	Qty/pkg	Unit Price
<u>HR401CD012</u>	12VDC, 1 C/O contact, 16A ¹	10	\$4.60
<u>HR401CD024</u>	24VDC, 1 C/O contact, 16A ¹	10	\$4.60
<u>HR402CD012</u>	12VDC, 2 C/O contacts, 10A	10	\$5.15
<u>HR402CD024</u>	24VDC, 2 C/O contacts, 10A	10	\$5.15
<u>HR5XS22</u>	Socket for relays, screw terminals	10	\$4.75
<u>HR5X87</u>	Retain clip	20	\$0.35
<u>HR5X30</u>	Marker tags	100	\$0.30

¹ Rated current if the relay is soldered directly onto the board; with socket, the maximum current is 10A.

● Miniature Relays with LED Indicator and Mechanical Actuator



Item #	Description	Qty/pkg	Unit Price
<u>HR501CA024</u>	24VAC, 1 C/O contact, 16A ¹	10	\$7.45
<u>HR501CA110</u>	120VAC, 1 C/O contact, 16A ¹	10	\$8.45
<u>HR501CA230</u>	230VAC, 1 C/O contact, 16A ¹	10	\$10.00
<u>HR501CD012</u>	12VDC, 1 C/O contact, 16A ¹	10	\$6.50
<u>HR501CD024</u>	24VDC, 1 C/O contact, 16A ¹	10	\$6.50
<u>HR502CA024</u>	24VAC, 2 C/O contacts, 8A	10	\$8.20
<u>HR502CA110</u>	120VAC, 2 C/O contacts, 8A	10	\$9.40
<u>HR502CA230</u>	230VAC, 2 C/O contacts, 8A	10	\$11.05
<u>HR502CD012</u>	12VDC, 2 C/O contacts, 8A	10	\$7.30
<u>HR502CD024</u>	24VDC, 2 C/O contacts, 8A	10	\$7.30
<u>HR5XS22</u>	Socket for relays, screw terminals	10	\$4.75
<u>HR5X87</u>	Retain clip	20	\$0.35
<u>HR5X30</u>	Marker tags	100	\$0.30

¹ Rated current if the relay is soldered directly onto the board; with socket, the maximum current is 10A.

Industrial Relays with LED Indicator and Mechanical Actuator



Item #	Description	Qty/pkg	Unit Price
<u>HR602CA024</u>	24VAC, 2 C/O contacts, 7A	10	\$6.15
<u>HR602CA110</u>	120VAC, 2 C/O contacts, 7A	10	\$6.15
<u>HR602CA230</u>	230VAC, 2 C/O contacts, 7A	10	\$6.15
<u>HR602CD012</u>	12VDC, 2 C/O contacts, 7A	10	\$6.15
<u>HR602CD024</u>	24VDC, 2 C/O contacts, 7A	10	\$6.15
<u>HR604CA024</u>	24VAC, 4 C/O contacts, 5A	10	\$7.00
<u>HR604CA110</u>	120VAC, 4 C/O contacts, 5A	10	\$7.00
<u>HR604CA230</u>	230VAC, 4 C/O contacts, 5A	10	\$7.00
<u>HR604CD012</u>	12VDC, 4 C/O contacts, 5A	10	\$7.00
<u>HR604CD024</u>	24VDC, 4 C/O contacts, 5A	10	\$7.00
<u>HR6XS22</u>	Socket for relays w/2 contacts, screw terminals	10	\$4.10
<u>HR6XS42</u>	Socket for relays w/4 contacts, screw terminals	10	\$4.70
<u>HR6X88</u>	Retain/release clip	20	\$0.35
<u>HR6X30</u>	Marker tags	100	\$0.20

8-Pin and 11-Pin Industrial Relays with LED and Mechanical Actuator



Item #	Description	Qty/pkg	Unit Price
8-Pin type			
<u>HR702CA024</u>	24VAC, 2 C/O contacts, 10A	10	\$9.10
<u>HR702CA110</u>	120VAC, 2 C/O contacts, 10A	10	\$9.10
<u>HR702CA230</u>	230VAC, 2 C/O contacts, 10A	10	\$9.10
<u>HR702CD024</u>	24VDC, 2 C/O contacts, 10A	10	\$9.10
<u>HR702CD110</u>	110VDC, 2 C/O contacts, 10A	10	\$9.10
11-Pin type			
<u>HR703CA024</u>	24VAC, 3 C/O contacts, 10A	10	\$11.30
<u>HR703CA110</u>	120VAC, 3 C/O contacts, 10A	10	\$11.30
<u>HR703CA230</u>	230VAC, 3 C/O contacts, 10A	10	\$11.30
<u>HR703CD024</u>	24VDC, 3 C/O contacts, 10A	10	\$11.30
<u>HR703CD110</u>	110VDC, 3 C/O contacts, 10A	10	\$11.30
<u>HR7XS1</u>	Socket for 8-pin relays, screw terminals	10	\$4.10
<u>HR7XS2</u>	Socket for 11-pin relays, screw terminals	10	\$4.70
<u>HR7X87</u>	Retain clip	20	\$0.35

Power Relay with Atex Certification



Item #	Description	Qty/pkg	Unit Price
<u>HR8020A024</u>	24VAC, 2 NO contacts, 30A	10	\$16.40
<u>HR8020A230</u>	230VAC, 2 NO contacts, 30A	10	\$16.40
<u>HR802CA024</u>	24VAC, 2 C/O contacts, 30A ¹	10	\$16.40
<u>HR802CA230</u>	230VAC, 2 C/O contacts, 30A ¹	10	\$16.40

¹ 3A for NC contact

Note: These items are sold by package only

● Soft Starters ADXN Series

- 2 Mechanical frame sizes
 - 6. 12. 18A - 25. 30. 38. 45A
- Compact dimensions
45mm wide housing for the entire range
- Integrated protection functions
- Integrated bypass
- Rated line voltage from 208 to 600 VAC
- NFC configuration
- 2 integrated relay outputs
- IR optical port
- 3 status LED
- cULus certified



VERSION	ADXNB BASIC	ADXNP ADVANCED
Controlled phases	2	2
Integrated bypass	√	√
Digital start input	√	√
Digital relay outputs	√ 2 fixed function	√ 2 programmable
Configurable alarm properties	-	√
Protection against phase loss	√	√
Protection against phase inversion	√ disabled	√
Soft starter thermal protection (overtemperature)	√	√
NFC connectivity for programming	-	√
Potentiometers for basic settings	√	√ can be overridden via NFC
Configurable current limit	-	√
Electronic motor thermal protection	-	√
Protection against locked rotor	-	√
Protection against low load	-	√
Max torque signalling	-	√
IR optical port for configuration and monitoring using optional USB (CX01), Wi-Fi (CX02) and RS485 (CX04)	-	√

Rated starter current le FLA (A)	Rated motor power 600V (HP)	BASIC				ADVANCED			
		Auxiliary supply Us							
		100-240 VAC		24VAC/DC		100-240 VAC		24VAC/DC	
Item #	Unit Price	Item #	Unit Price	Item #	Unit Price	Item #	Unit Price		
6.1	5	ADXNB006	\$241.70	ADXNB00624	\$253.80	ADXNP006	\$417.60	ADXNP00624	\$438.45
11	10	ADXNB012	\$293.25	ADXNB01224	\$307.95	ADXNP012	\$508.10	ADXNP01224	\$533.50
18	15	ADXNB018	\$319.05	ADXNB01824	\$335.00	ADXNP018	\$590.30	ADXNP01824	\$619.75
24.2	20	ADXNB025	\$364.20	ADXNB02524	\$382.40	ADXNP025	\$632.20	ADXNP02524	\$663.80
28	25	ADXNB030	\$451.20	ADXNB03024	\$473.75	ADXNP030	\$804.90	ADXNP03024	\$845.15
34	30	ADXNB038	\$554.30	ADXNB03824	\$582.05	ADXNP038	\$1036.30	ADXNP03824	\$1088.15
44	40	ADXNB045	\$670.35	ADXNB04524	\$703.85	ADXNP045	\$1211.15	ADXNP04524	\$1271.95

● Soft Starters ADXL Series



SIMPLE! INTELLIGENT! EFFICIENT!

- Easy programming in 4 steps only
- Programming via NFC or Wi-Fi
- APP for smart phone or tablet (free)
- Works from 208 to 600VAC
- Auxiliary supply from 120 to 240VAC
- Built-in bypass relay
- Optional RS485 communication
- Modbus-ASCII, Modbus-RTU, Modbus-TCP
- Programmable inputs and outputs

Item #	FLA (A)	208V HP	220-240V HP	380-415V HP	440-480V HP	550-600V HP	Unit Price
ADXL0030600	28	10	10	15	20	25	\$779.55
ADXL0045600	44	10	15	25	30	40	\$1063.70
ADXL0060600	60	20	20	30	40	50	\$1255.20
ADXL0075600	75	25	25	40	50	60	\$1440.20
ADXL0085600	83	25	30	50	60	75	\$1605.40
ADXL0115600	114	40	40	60	75	100	\$1770.50
ADXL0135600*	130	40	50	75	100	125	\$2087.60
ADXL0162600*	156	50	60	75	125	150	\$2281.90
ADXL0195600*	192	60	60	100	150	200	\$2609.55
ADXL0250600*	248	75	100	150	200	250	\$2770.70
ADXL0320600*	320	100	125	200	250	300	\$3083.85

*Terminal lugs kit not included

● Terminal Lugs and Protection Cover Kits

EXA01	KIT OF 3 TERMINAL LUGS FOR ADXL 135A,162A & 195A	\$51.30
EXA02	KIT OF 3 TERMINAL PROTECTION COVERS FOR ADXL 135A, 162A & 195A	\$88.50
EXA03	KIT OF 3 TERMINAL LUGS FOR ADXL 250A & 320A	\$164.25
EXA04	KIT OF 3 TERMINAL PROTECTION COVERS FOR ADXL 250A & 320A	\$145.00

● Manual Motor Starter Kits with Enclosure Type 4X



SM1Z1711P



SM1P...

Item #	Adjustment	Unit Price
SM1P0016KIT	0,1-0,16A	\$83.30
SM1P0025KIT	0,16-0,25A	\$83.30
SM1P0040KIT	0,25-0,4A	\$83.30
SM1P0063KIT	0,4-0,63A	\$83.30
SM1P0100KIT	0,63-1A	\$83.30
SM1P0160KIT	1-1,6A	\$83.30
SM1P0250KIT	1,6-2,5A	\$83.30
SM1P0400KIT	2,5-4A	\$83.30
SM1P0650KIT	4-6,5A	\$83.30
SM1P1000KIT	6,3-10A	\$83.30
SM1P1400KIT	9-14A	\$105.70
SM1P1800KIT	13-18A	\$105.70
SM1P2300KIT	17-23A	\$112.35
SM1P2500KIT	20-25A	\$112.35

● Manual Motor Starter Kits with Enclosure + E-STOP Type 4X



SM1Z1712P



SM1P...

Item #	Adjustment	Unit Price
SM1P0016EKIT	0,1-0,16A	\$113.65
SM1P0025EKIT	0,16-0,25A	\$113.65
SM1P0040EKIT	0,25-0,4A	\$113.65
SM1P0063EKIT	0,4-0,63A	\$113.65
SM1P0100EKIT	0,63-1A	\$113.65
SM1P0160EKIT	1-1,6A	\$113.65
SM1P0250EKIT	1,6-2,5A	\$113.65
SM1P0400EKIT	2,5-4A	\$113.65
SM1P0650EKIT	4-6,5A	\$113.65
SM1P1000EKIT	6,3-10A	\$113.65
SM1P1400EKIT	9-14A	\$118.90
SM1P1800EKIT	13-18A	\$118.90
SM1P2300EKIT	17-23A	\$130.80
SM1P2500EKIT	20-25A	\$130.80

Manual Motor Starter Kits Including Padlockable Enclosure Type 4X



SM1Z1715R



SM1R...

Item #	Adjustment	Unit Price
SM1R0016KIT	0,1-0,16A	\$126.90
SM1R0025KIT	0,16-0,25A	\$126.90
SM1R0040KIT	0,25-0,4A	\$126.90
SM1R0063KIT	0,4-0,63A	\$126.90
SM1R0100KIT	0,63-1A	\$126.90
SM1R0160KIT	1-1,6A	\$126.90
SM1R0250KIT	1,6-2,5A	\$126.90
SM1R0400KIT	2,5-4A	\$126.90
SM1R0650KIT	4-6,5A	\$126.90
SM1R1000KIT	6,3-10A	\$144.05
SM1R1400KIT	9-14A	\$144.05
SM1R1800KIT	13-18A	\$144.05
SM1R2300KIT	17-23A	\$157.25
SM1R2500KIT	20-25A	\$157.25

Limit Switches

- Metal housing
- Degree of protection IP65
- 1NO+1NC contact
- ½ NPT thread
- Certification: cULus



KMA1S11N



KMB1S11N



KML2S11N



KME1S11N



KMF1S11N



KMM2S11N

\$44.90

● Time Relay



- Multifunction
- Supply 12 to 240VAC/DC
- Time scale from 0.1 second to 10 days
- 1 relay output SPDT

TMM1

\$56.85

● Time Relay / Counter / Hour Counter with NFC Technology



- Supply: 12 to 240V AC/DC
- Relay output: 8A 250V AC
- Time scale: 0.1 second to 999 days
- Absolute time precision
- Can do more than 40 functions
- Password protection of parameters against undesirable modifications
- QR code for direct access to user's manual



TMM1NFC

\$69.30

● Protection Relay



- For three-phase systems, with or without neutral
- Minimum and maximum voltage
- Minimum and maximum frequency
- Asymmetry
- Phase loss and phase sequence
- With NFC technology
- 1 relay output (8A)

208-240VAC
PMV95NA240NFC

\$240.90

380-575VAC
PMV95NA575NFC

\$240.90

● Voltage Monitoring Relays - Phase Loss / Incorrect Phase Sequence



- For three-phase systems, without neutral
- Phase loss detection if one of the voltages is <70% rated value
- Phase loss tripping time: 60ms
- 1 relay output with 1 changeover contact (SPDT)
- Mounting on DIN rail or screw fixing via pull out tabs

100...240VAC
PMV20A240

\$133.25

208...575VAC
PMV20A575

\$133.25

600VAC
PMV20A600

\$133.25

● Voltage Monitoring Relays - Phase Loss / Incorrect Phase Sequence / Min. & Max AC Voltage



- For three-phase systems, without neutral
- True RMS (TRMS) measurements
- Control of phase-to-phase voltages
- Phase loss detection if one of the voltages is <70% rated value
- Phase loss tripping time: 60ms
- 1 relay output with 1 changeover contact (SPDT)
- Mounting on DIN rail or screw fixing via pull out tabs

208...240VAC
PMV50A240

\$194.75

380...575VAC
PMV50A575

\$194.75

600VAC
PMV50A600

\$194.75

● Level Control Relay



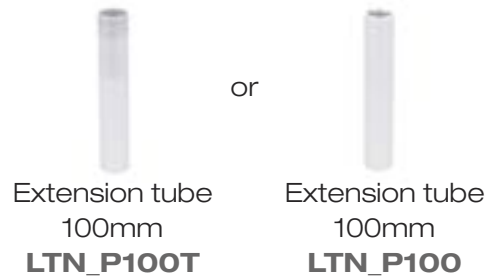
- Emptying or filling functions
- 24 to 240VAC/DC
- 1 relay output SPDT

LVM25240

\$148.65

● Signal Tower Lights Ø50mm/1.97" and Ø70mm/2.75"

**Max. 4 light modules + sound module
or 5 light modules + top cover**



Description	Ø50mm		Ø70mm	
	Item #	Unit Price	Item #	Unit Price
Top cover				
To be used only if sound module is not present	LTN50C	\$3.75	LTN70C	\$3.85
Continuous sound modules				
85dB. IP65. Type 4	LTN50MSL	\$35.45	LTN70MSL	\$40.75
100dB. IP20	LTN50MSH	\$35.45	LTN70MSH	\$40.75
Blinking or steady light modules. Integrated LED lamp IP65				
Orange	LTN50ML1	\$33.70	LTN70ML1	\$38.75
Green	LTN50ML3	\$33.70	LTN70ML3	\$38.75
Red	LTN50ML4	\$33.70	LTN70ML4	\$38.75
Blue	LTN50ML6	\$33.70	LTN70ML6	\$38.75
White	LTN50ML8	\$33.70	LTN70ML8	\$38.75
Wiring modules. IP65.				
12...24VDC	LTN50MW024	\$50.55	LTN70MW024	\$58.15
110...230VAC	LTN50MW230	\$92.00	LTN70MW230	\$101.35
Extension tubes				
100mm/3.94", metal with threaded end*	LTN50P100T	\$7.90	LTN70P100T	\$8.10
100mm/3.94", metal**	LTN50P100	\$7.60	LTN70P100	\$7.85
Fixing bases				
Horizontal surface mounting, black plastic	LTN50BP1	\$8.20	LTN70BP1	\$8.40
Wall mounting, grey plastic	LTN50BP2	\$8.95	LTN70BP2	\$9.30

* Must be ordered with LTN_BP1

** Must be ordered with LTN_BP2



● Pilot Lights LED Type



LPML	
Voltage ↑	Colour ↑
12VAC/DC	A 1 ■
24VAC/DC	B 3 ■
48VAC/DC	D 4 ■
110VAC	E 5 ■
110VDC	F 6 ■
230VAC	M 7 □
220VDC	N

\$10.65

Protection Degree : As per UL: 3R, 4/12, 4X / As per IEC: IP66, IP67, IP69K

● Monoblock Potentiometers



LPCPA	
001	1 kΩ
002	2.5 kΩ
005	5 kΩ
010	10 kΩ
050	50 kΩ
100	100 kΩ
500	500 kΩ

\$49.65

Protection Degree : As per UL: 3R, 4/12, 4X / As per IEC: IP66, IP67, IP69K

● Pulse and Steady Tone Monoblock Buzzers



IP40: sound intensity 90dB/10cm.
IP69K: sound intensity 80dB/10cm.

\$50.90

\$52.95

Supply voltage
9-15VAC/DC
18-30VAC/DC
85-140VAC/DC
185-265VAC/DC

IP40
LPCZSA
LPCZSB
LPCZSE
LPCZSM

Supply voltage
9-15VAC/DC
18-30VAC/DC
85-140VAC/DC
185-265VAC/DC

IP69K
LPCZSAIP
LPCZSBIP
LPCZSEIP
LPCZSMIP

● Communication Interfaces



LPCD	
USB 01	3.0 A/A connection type
USB 03	3.0 A/B connection type
USB 05	3.0 B/A connection type
RJ45 06	Ethernet connection type (shielded)

\$39.65

Protection Degree : As per UL: 3R, 4/12, 4X / As per IEC: IP65 (with cap mounted)

● Pushbutton Kits

Degree of protection NEMA 4X (IP69K)

Pushbutton

NO contact

Contact holder



+



+



LPCB102K10 (black) **LPCB105K10** (yellow)
LPCB103K10 (green) **LPCB106K10** (blue)
LPCB104K10 (red) **LPCB108K10** (white)
LPCB104K01 (red, with NC contact)

\$11.30

● E-Stop Kit

Degree of protection NEMA 4X (IP69K)

E-stop twist to release

NC contact

Contact holder



+



+



LPCB6644K01

\$25.15

● Selector Kits

Degree of protection NEMA 4X (IP69K)

2 position selector

NO contact

Contact holder



+



+



LPCS120K10

\$18.30

3 position selector

NO contact

NO contact

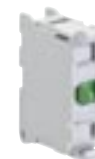
Contact holder



+



+



+



LPCS130K20

\$22.40

● Key Selector Kits

Degree of protection NEMA 4X (IP69K)

2 position selector

NO contact

Contact holder



+



+



LPCS320K10

\$29.05

3 position selector

NO contact

NO contact

Contact holder



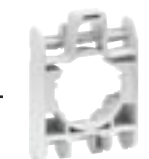
+



+



+



LPCS330K20

\$37.10

22mm Metal Pushbutton Kits

Degree of protection NEMA 4X (IP69K)

Pushbutton

NO
contact

Contact
holder



+



+



LPSB102K10 (black)
LPSB103K10 (green)
LPSB104K10 (red)
LPSB104K01 (red, with NC contact)

LPSB105K10 (yellow)
LPSB106K10 (blue)
LPSB108K10 (white)

\$16.40

22mm Metal Selector Kits

Degree of protection NEMA 4X (IP69K)

2 position
selector

NO
contact

Contact
holder



+



+



LPSS120K10

\$25.00

3 position
selector

NO
contact

NO
contact

Contact
holder



+



+



+



LPSS130K20

\$29.75

22mm Metal Key Selector Kits

Degree of protection NEMA 4X (IP69K)

2 position
selector

NO
contact

Contact
holder



+



+



LPSS320K10

\$47.15

3 position
selector

NO
contact

NO
contact

Contact
holder



+



+



+



LPSS330K20

\$56.40

● **Yellow Control Station with Protection in Polycarbonate Enclosure
NEMA 4X (IP69K)**

LPZP1B5P603

Turn to release E-stop
with 1NC contact ISO 13850

\$61.40



● **Yellow Control Station with 1 Actuator in Polycarbonate Enclosure
NEMA 4X (IP69K)**

LPZP1B5603

Twist to release E-Stop
with 1NC contact ISO 13850

\$50.30



● **Grey Control Stations with 1 Actuator in Polycarbonate Enclosure
NEMA 4X (IP69K)**

LPZP1B8101

Green p.b. "START" symbol
with 1NO contact

\$30.45



LPZP1B8302

Key selector 2 positions "0-I"
label with 1NO & 1NC contacts

\$60.95



LPZP1B8103

Red p.b. "STOP" symbol
with 1NC contact

\$30.45



Grey Control Stations with 2 Actuators in Polycarbonate Enclosure NEMA 4X (IP69K)

LPZP2B8900

Green p.b. "I" symbol with 1NO contact and red p.b. "O" symbol with 1NC contact

\$49.85



LPZP2B8902

White p.b. up arrow symbol with 1NO contact and black p.b. down arrow symbol with 1NO contact

\$49.85



METAL Control Stations IP67 (Type 4X)



Item #	Description	Cover	Unit Price
LPZM1A5	1 hole	Yellow	\$39.65
LPZM1A5P	1 hole with guard	Yellow	\$52.95
LPZM1A8	1 hole	Grey	\$39.65
LPZM2A5	2 holes	Yellow	\$46.30
LPZM2A8	2 holes	Grey	\$46.30
LPZM3A8	3 holes	Grey	\$55.50
LPZM4A8	4 holes	Grey	\$79.35
LPZM5A8	5 holes	Grey	\$105.70
LPZM6A8	6 holes	Grey	\$129.50

2 or 4 Direction Metal Joysticks NEMA 4X (IP69K)

LPSJ200

2 directions spring return with 2NO contacts

\$59.60



LPSJ400

4 directions spring return with 4NO contacts

\$80.50



LPSJ211

2 directions maintained interlock with 2NO contacts

\$71.55

LPSJ411

4 directions maintained interlock with 4NO contacts

\$96.55

● Safety Relays



2NO
SRBES20

\$203.85



3NO+1NC
SRBES31

\$244.15



EXP. UNIT 4NO+1NC
SRBEM41

\$302.90



OSSD DEVICES INTEGRATED
2NO
SRASM20

\$190.00



2-HAND DEVICES
2NO+1PNP
SRATH21

\$283.25



LIGHT CURTAINS
2NO+1PNP
SRALC21

\$302.90



MULTIFUNCTION
2NO+1PNP
SRAMF21

\$352.80

● **16A Cam Switches Voltmeter/Ammeter**



Voltmeter
Phase-Phase L1L2-L2L3-L3L1, front mount
GX1667U

\$43.95

Ammeter
With or without CT, L1-L2-L3, front mount
GX1697U

\$74.15

Ammeter
With CT, L1-L2-L3, front mount
GX1698U

\$46.60

UL/CSA general use [A]	UL/CSA horsepower ratings					
	1 phase		3 phases			
	120V	230V	200V	230V	480V	600V
12	¼	1	1½	3	5	5

● **25A Cam Switches ON/OFF type**



1 pole
Front mount
7GN2590U

\$43.95

2 poles
Front mount
7GN2591U

\$46.60

3 poles
Front mount
7GN2510U

\$49.05

UL/CSA general use [A]	UL/CSA horsepower ratings					
	1 phase		3 phases			
	120V	230V	200V	230V	480V	600V
30	1½	3	3	5	10	15

● **25A Changeover Cam Switches 1-0-2**



3 poles
Front mount
7GN2553U

\$60.30

4 poles
Front mount
7GN2575U

\$74.15

UL/CSA general use [A]	UL/CSA horsepower ratings					
	1 phase		3 phases			
	120V	230V	200V	230V	480V	600V
30	1½	3	3	5	10	15

1 POLE

Description	Supplementary Protection* (UL1077/CSA: C22.2 No 235)		Branch Protection (UL489/CSA: C22.2 No 5)	
	Item #	Unit Price	Item #	Unit Price
CURVE C - 1A	P1MB1PC01	\$15.10	P1MBUH1PC01	\$28.85
CURVE C - 1.6A	N/A		P1MBUH1PC01V6	\$28.85
CURVE C - 2A	P1MB1PC02	\$15.10	P1MBUH1PC02	\$28.85
CURVE C - 3A	P1MB1PC03	\$15.10	P1MBUH1PC03	\$28.85
CURVE C - 4A	P1MB1PC04	\$15.10	P1MBUH1PC04	\$28.85
CURVE C - 5A	N/A		P1MBUH1PC05	\$28.85
CURVE C - 6A	P1MB1PC06	\$15.10	P1MBUH1PC06	\$28.85
CURVE C - 7A	N/A		P1MBUH1PC07	\$28.85
CURVE C - 8A	P1MB1PC08	\$15.10	P1MBUH1PC08	\$28.85
CURVE C - 10A	P1MB1PC10	\$15.10	P1MBUH1PC10	\$28.85
CURVE C - 12A	N/A		P1MBUH1PC12	\$28.85
CURVE C - 13A	P1MB1PC13	\$15.10	P1MBUH1PC13	\$28.85
CURVE C - 15A	N/A		P1MBUH1PC15	\$28.85
CURVE C - 16A	P1MB1PC16	\$15.10	P1MBUH1PC16	\$28.85
CURVE C - 20A	P1MB1PC20	\$15.10	P1MBUH1PC20	\$28.85
CURVE C - 25A	P1MB1PC25	\$15.10	P1MBUH1PC25	\$28.85
CURVE C - 30A	N/A		P1MBUH1PC30	\$28.85
CURVE C - 32A	P1MB1PC32	\$15.10	P1MBUH1PC32	\$28.85
CURVE C - 35A	N/A		P1MBUL1PC35	\$30.15
CURVE C - 40A	P1MB1PC40	\$19.15	P1MBUL1PC40	\$30.15
CURVE C - 50A	P1MB1PC50	\$19.15	P1MBUL1PC50	\$30.15
CURVE C - 60A	N/A		P1MBUL1PC60	\$30.15
CURVE C - 63A	P1MB1PC63	\$19.15	P1MBUL1PC63	\$30.15

* This product is cURus.



2 POLES

Description	Supplementary Protection* (UL1077/CSA: C22.2 No 235)		Branch Protection (UL489/CSA: C22.2 No 5)	
	Item #	Unit Price	Item #	Unit Price
CURVE C - 1A	P1MB2PC01	\$35.90	P1MBUH2PC01	\$70.70
CURVE C - 1.6A	P1MB2PC01V6	\$35.90	P1MBUH2PC01V6	\$70.70
CURVE C - 2A	P1MB2PC02	\$35.90	P1MBUH2PC02	\$70.70
CURVE C - 3A	P1MB2PC03	\$35.90	P1MBUH2PC03	\$70.70
CURVE C - 4A	P1MB2PC04	\$35.90	P1MBUH2PC04	\$70.70
CURVE C - 5A	N/A		P1MBUH2PC05	\$70.70
CURVE C - 6A	P1MB2PC06	\$35.90	P1MBUH2PC06	\$70.70
CURVE C - 7A	N/A		P1MBUH2PC07	\$70.70
CURVE C - 8A	P1MB2PC08	\$35.90	P1MBUH2PC08	\$70.70
CURVE C - 10A	P1MB2PC10	\$35.90	P1MBUH2PC10	\$70.70
CURVE C - 12A	N/A		P1MBUH2PC12	\$70.70
CURVE C - 13A	P1MB2PC13	\$35.90	P1MBUH2PC13	\$70.70
CURVE C - 15A	N/A		P1MBUH2PC15	\$70.70
CURVE C - 16A	P1MB2PC16	\$35.90	P1MBUH2PC16	\$70.70
CURVE C - 20A	P1MB2PC20	\$35.90	P1MBUH2PC20	\$70.70
CURVE C - 25A	P1MB2PC25	\$35.90	P1MBUH2PC25	\$70.70
CURVE C - 30A	N/A		P1MBUH2PC30	\$70.70
CURVE C - 32A	P1MB2PC32	\$35.90	P1MBUH2PC32	\$70.70
CURVE C - 35A	N/A		P1MBUL2PC35	\$76.90
CURVE C - 40A	P1MB2PC40	\$40.00	P1MBUL2PC40	\$76.90
CURVE C - 50A	P1MB2PC50	\$40.00	P1MBUL2PC50	\$76.90
CURVE C - 60A	N/A		P1MBUL2PC60	\$76.90
CURVE C - 63A	P1MB2PC63	\$40.00	P1MBUL2PC63	\$76.90

* This product is cURus.



3 POLES

Description	Supplementary Protection* (UL1077/CSA: C22.2 No 235)		Branch Protection (UL489/CSA: C22.2 No 5)	
	Item #	Unit Price	Item #	Unit Price
CURVE C - 1A	P1MB3PC01	\$50.75	P1MBUH3PC01	\$102.85
CURVE C - 1.6A	N/A		P1MBUH3PC01V6	\$102.85
CURVE C - 2A	P1MB3PC02	\$50.75	P1MBUH3PC02	\$102.85
CURVE C - 3A	P1MB3PC03	\$50.75	P1MBUH3PC03	\$102.85
CURVE C - 4A	P1MB3PC04	\$50.75	P1MBUH3PC04	\$102.85
CURVE C - 5A	N/A		P1MBUH3PC05	\$102.85
CURVE C - 6A	P1MB3PC06	\$50.75	P1MBUH3PC06	\$102.85
CURVE C - 7A	N/A		P1MBUH3PC07	\$94.65
CURVE C - 8A	P1MB3PC08	\$50.75	P1MBUH3PC08	\$94.65
CURVE C - 10A	P1MB3PC10	\$50.75	P1MBUH3PC10	\$94.65
CURVE C - 12A	N/A		P1MBUH3PC12	\$94.65
CURVE C - 13A	P1MB3PC13	\$50.75	P1MBUH3PC13	\$94.65
CURVE C - 15A	N/A		P1MBUH3PC15	\$94.65
CURVE C - 16A	P1MB3PC16	\$50.75	P1MBUH3PC16	\$94.65
CURVE C - 20A	P1MB3PC20	\$50.75	P1MBUH3PC20	\$94.65
CURVE C - 25A	P1MB3PC25	\$50.75	P1MBUH3PC25	\$94.65
CURVE C - 30A	N/A		P1MBUH3PC30	\$94.65
CURVE C - 32A	P1MB3PC32	\$50.75	P1MBUH3PC32	\$94.65
CURVE C - 35A	N/A		P1MBUL3PC35	\$108.40
CURVE C - 40A	P1MB3PC40	\$54.95	P1MBUL3PC40	\$108.40
CURVE C - 50A	P1MB3PC50	\$54.95	P1MBUL3PC50	\$108.40
CURVE C - 60A	N/A		P1MBUL3PC60	\$108.40
CURVE C - 63A	P1MB3PC63	\$54.95	P1MBUL3PC63	\$108.40

* This product is cURus.



Enclosed Disconnects



- Padlockable handle (for 3 padlocks in OFF position)
- Degree of protection: IP65; Nema type 4X
- Rated insulation voltage Ui: 1000VAC
- Rated as motor disconnect
- Also rated as manual motor controller

GAZ032UL

GAZ063SAUL

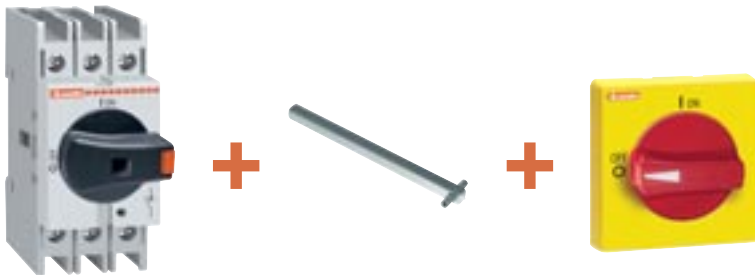
GAZ080UL

\$62.55

\$118.90

\$170.15

32A, 63A or 80A Disconnect Kits



The kit includes:

- 32A, 63A or 80A disconnect rated as motor disconnect
- Shaft 200mm length
- Padlockable GAX63 handle, ring-type fixing, Nema type 4X

32A

GA032KIT

\$59.45

63A

GA063KIT

\$89.85

80A

GA080KIT

\$114.90

200A, 400A, 600A or 800A Non Fusible Disconnect Kits with Pistol Handle



200A
GL0200C1ULKIT
\$466.80

The GL0200C1ULKIT includes:

- 200A disconnect UL98 (CSA 22.2 No. 4)
- Shaft 300mm length
- Padlockable pistol grip handle (defeatable) red/yellow, type 4X

400A
GL0400C1ULKIT
\$692.25

The GL0400C1ULKIT includes:

- 400A disconnect UL98 (CSA 22.2 No. 4)
- Shaft 500mm length
- Padlockable pistol grip handle (defeatable) red/yellow, type 4X



600A
GL0600C1ULKIT
\$1135.20

The GL0600C1ULKIT includes:

- 600A disconnect UL98 (CSA 22.2 No. 4)
- Shaft 500mm length
- Padlockable pistol grip handle (defeatable) red/yellow, type 4X
- Shaft alignment ring



800A
GL0800C1ULKIT
\$1673.30

The GL0800C1ULKIT includes:

- 800A disconnect UL98 (CSA 22.2 No. 4)
- Shaft 500mm length
- Padlockable pistol grip handle (defeatable) red/yellow, type 4X
- Shaft alignment ring

● 30A, 60A, 100A or 200A Fusible Disconnect Kits (UL98) Type “J”

The kit includes:

- 30A, 60A, 100A or 200A fusible disconnect (UL98)
- Shaft 300mm length
- Padlockable pistol grip handle (defeatable)
red/yellow Type 4X



30A: GMFJ030C12KIT

\$220.70



60A: GMFJ060C03KIT

\$275.70

100A: GMFJ100C03KIT

\$344.60

200A: GMFJ200C03KIT

\$761.20

● Energy Meters - Multimeters



DMG600

\$541.75

DMG610

\$581.45

Built-in RS485 communication port

Single, Two and Three Phase with or without neutral	DMG600
Icon-text LCD	✓
Voltage-Current measurements	✓
Frequency-Power measurements	✓
Power factor measurement	✓
Active-Reactive energy measurements	✓
THD (Total Harmonic Distortion Analysis)	✓
Usage in low to high voltage systems	✓
Measuring Range 50-720 VAC phase to phase (30-360VAC ph-N)	✓
Supply voltage range 100-400VAC/120-250VDC	✓
Front optical port	✓
Built-in RS485 communication port	DMG610

● Energy Counter - Single Phase



DMED100T1A120

\$143.50



DMED110T1A120

\$174.25

LCD display 5+1 digit count	✓
Direct connection up to 40A	✓
120VAC supply	✓
Clearable partial energy measurement	✓
1 pulse output	DMED100T1A120
Program. static output	DMED110T1A120
Multimeasurements	DMED110T1A120

● HMI Displays

- Widescreen display with resistive touchscreen
- LED backlight
- Ethernet, USB and serial port (type RS232-RS485-RS422)
- Auxiliary supply: 12-24VDC
- Protection degree: IP66, type 2 and 4X (front); IP20 (rear)



HMI 4.3" LRHA04

\$466.10



HMI 7" LRHA07

\$504.95



HMI 10.1" LRHA10

\$1135.40

Programming Licence for 1 user LRHSW01

\$177.40

● Fuse Holders



- Maximum rated voltage Ue 690VAC
- Operational voltage for status light indicator 120...690 VAC
- Compact sizes compliant with standards for electrical equipment
- UL and CSA certified versions

Item #	Description	Status Indicator	Qty/ pkg	Unit Price
MIDGET FUSE HOLDERS (10X38)				
<u>FB01F1P</u>	Fuse holder 1 pole 690V 32A	No	12	\$6.55
<u>FB01F1PL</u>	Fuse holder 1 pole 690V 32A	Yes	12	\$12.55
<u>FB01F2P</u>	Fuse holder 2 poles 690V 32A	No	6	\$14.15
<u>FB01F3P</u>	Fuse holder 3 poles 690V 32A	No	4	\$21.15

CC FUSE HOLDERS (10X38)

<u>FB01G1P</u>	Fuse holder 1 pole 600V 30A	No	12	\$6.55
<u>FB01G1PL</u>	Fuse holder 1 pole 600V 30A	Yes	12	\$12.55
<u>FB01G2P</u>	Fuse holder 2 poles 600V 30A	No	6	\$14.55
<u>FB01G3P</u>	Fuse holder 3 poles 600V 30A	No	4	\$21.15

Note: These items are sold by package only

● Switching Power Supplies



- Rated output voltage: 24VDC
- Output power: 5...480W
- Wide input voltage range (90 to 265VAC & 120 to 375VDC)
- High efficiency up to 92%
- Adjustable output voltage
- Parallel connection using switch placed on front (some models)
- Certification: cULus Listed

Item #	Description	Output Voltage DC	Current DC	Output Power	Unit Price
<u>PSL100524</u>	Single Phase	24	0.21A	5W	\$44.00
<u>PSL101024</u>	Single Phase	24	0.42A	10W	\$45.30
<u>PSL101824</u>	Single Phase	24	0.75A	18W	\$50.15
<u>PSL106024</u>	Single Phase	24	2.5A	60W	\$82.35
<u>PSL124024</u>	Single Phase	24	10A	240W	\$234.55
<u>PSL130024</u>	Single Phase	24	12.5A	300W	\$325.00
<u>PSL148024</u>	Single Phase	24	20A	480W	\$361.95

● Compact Switching Power Supplies



- Rated output voltage: 24VDC
- Output power: 30...100W
- Wide input voltage range (120 to 240VAC)
- High efficiency up to 89%
- Adjustable output voltage
- Certification: cULus Listed

Item #	Description	Output Voltage DC	Current DC	Output Power	Unit Price
<u>PSE103024</u>	Single Phase	24	1.25A	30W	\$53.50
<u>PSE105024</u>	Single Phase	24	2.1A	50W	\$62.20
<u>PSE107224</u>	Single Phase	24	3A	72W	\$76.20
<u>PSE110024</u>	Single Phase	24	4.2A	100W	\$92.50
<u>PSE112024</u>	Single Phase	24	5A	120W	\$120.95

● HMI Starter Kits



24VDC Supply

The kit includes:

- PLC 12 inputs + 8 outputs
- All programming softwares
- All programming cables
- 1 programming licence
- 1 HMI

HMI 4.3"

LRD20HMI04KIT

\$1236.05

HMI 7"

LRD20HMI07KIT

\$1357.00

HMI 10.1"

LRD20HMI10KIT

\$2134.10

● Micro PLC Starter Kits



- 120VAC or 240VAC Supply type with 6 inputs + 4 outputs

LRDKIT10RA240

- 24VDC or 24VAC Supply type with 8 inputs + 4 outputs

LRDKIT12RD024

LRDKIT12RA024

Includes Software LRXSW and USB cable LRXC03

\$203.50

● Micro PLC



- 120VAC or 240VAC Supply type with 6 inputs + 4 outputs

LRD10RA240

- 24VDC or 24VAC Supply type with 8 inputs + 4 outputs

LRD12RD024

LRD12RA024

\$159.90

Definite Purpose Contactors

Ideal for air conditioning, heating, ventilation, refrigeration in the HVAC industry, compressors, food and beverage industry.



DPBG12



DPBF09
DPBF12
DPBF18



DPBF26
DPBF32



DPBF50
DPBF65

Item #	Motor Full Load Amps (FLA) 600V	Locked Rotor Amps (LRA)			Resistive Load 600V	Maximum Horsepower						Type of Terminal	Unit Price
		240V	480V	600V		1 Phase		3 Phase		480V	600V		
[A]	[A]	[A]	[A]	[A]	[A]	[HP]	[HP]	[HP]	[HP]	[HP]	[HP]	[HP]	[HP]

Non-reversing three-pole definite purpose contactors, 600VAC.

DPBG1210A①	14	84	84	84	20	3/4	2	3	3	10	10	Clamp-screw	\$36.30
DPBF0910A①	20	120	120	100	30	1 1/2	3	5	5	10	10	Clamp-screw	\$36.30
DPBF1210A①	25	150	150	125	30	2	3	5	5	10	15	Clamp-screw	\$42.35
DPBF1810A①	30	180	180	150	32	2	5	7 1/2	7 1/2	15	20	Clamp-screw	\$48.40
DPBF2600A①	40	240	240	200	50	3	7 1/2	10	10	30	30	Clamp-screw	\$54.45
DPBF3200A①	50	300	300	250	55	3	10	15	15	30	40	Clamp-screw	\$66.50
DPBF5000A①	70	420	420	350	90	5	15	20	25	50	50	Double lug-clamp	\$156.00
DPBF6500A①	80	480	480	400	100	7 1/2	15	25	30	60	60	Double lug-clamp	\$168.10

Accessory.

BFX8903	Metal screw-fixing plate for DPBF09-DPBF32 types	\$2.45
---------	--	--------

DPBG12, DPBF09, DPBF12 and DPBF18 are supplied with built-in 1NO auxiliary contact (SPST). Types with 1NC contact are also available; in the item #, replace digits "10" with "01".

① Complete item # with coil code from the table below:

Code	Voltage range
02460	24VAC 60Hz
12060	120VAC 60Hz
23060	230VAC 60Hz
46060	460VAC 60Hz
57560	575VAC 60Hz

Main Features:

- Motor FLA ratings at 600VAC: 14 to 80A
- Finger safe terminals
- Positive (force) guided contacts
- Up to four front or side mount auxiliary contacts
- Highly conductive auxiliary contacts
- Quick and simple installation for accessories
- Easy coil replacement
- Wide coil operating range.

Operating characteristics

- All types have undergone UL endurance tests of 250,000 cycles.
- Average coil consumption at 20°C/70°F:

	In rush	Holding
• DPBG12	25VA	4VA
• DPBF09-32	75VA	9VA
• DPBF50-65	210VA	15VA
- Built-in auxiliary contact ratings: A600 for all SPST, if any
- Screw termination:

	Torque	Wire size
• DPBG12	9lbin	AWG8-12
• DPBF09-18	13-16lbin	AWG8-16
• DPBF26-32	22-27lbin	AWG6-14
• DPBF50-65	44lbin	AWG2-14
- Operating temperature:
 - DPBG12: -40...+60°C/-40...+140°F
 - DPBF: -50...+70°C/-60...+160°F.

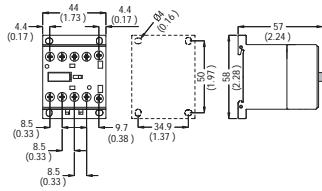
Certifications and compliance

Certifications: UL Listed for USA and Canada (cULus - File E93602) under Motor Controllers – Definite purpose contactors.

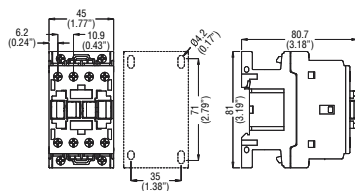
All contactors are CE marked per European Union requirements.

Compliant with standards: UL/CSA C22.2 n°60947-1, UL/CSA C22.2 n°60947-4-1, UL 508, CSA C22.2 n°14.

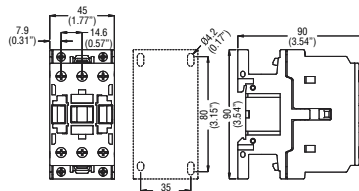
DIMENSIONS [mm (in)] Definite-purpose contactors DPBG12



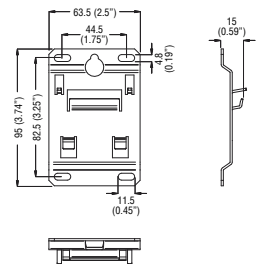
DPBF09-DPBF12-DPBF18



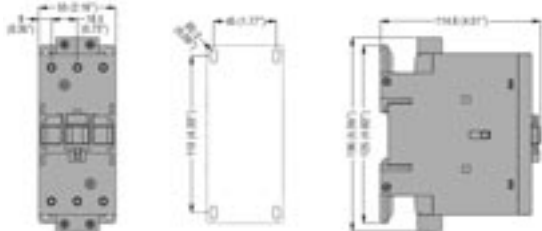
DPBF26-DPBF32



Fixing plate BFX8903



DPBF50-DPBF65



LOVATO ELECTRIC CORP.

4500 Garand Street
Laval, Quebec H7L 5Z6
CANADA

Tel.: 450-681-9200
Fax: 450-681-9884
Email: info@lovato.ca



Follow us on twitter & YouTube
lovatocanada@lovatocanada1

www.Lovato.ca